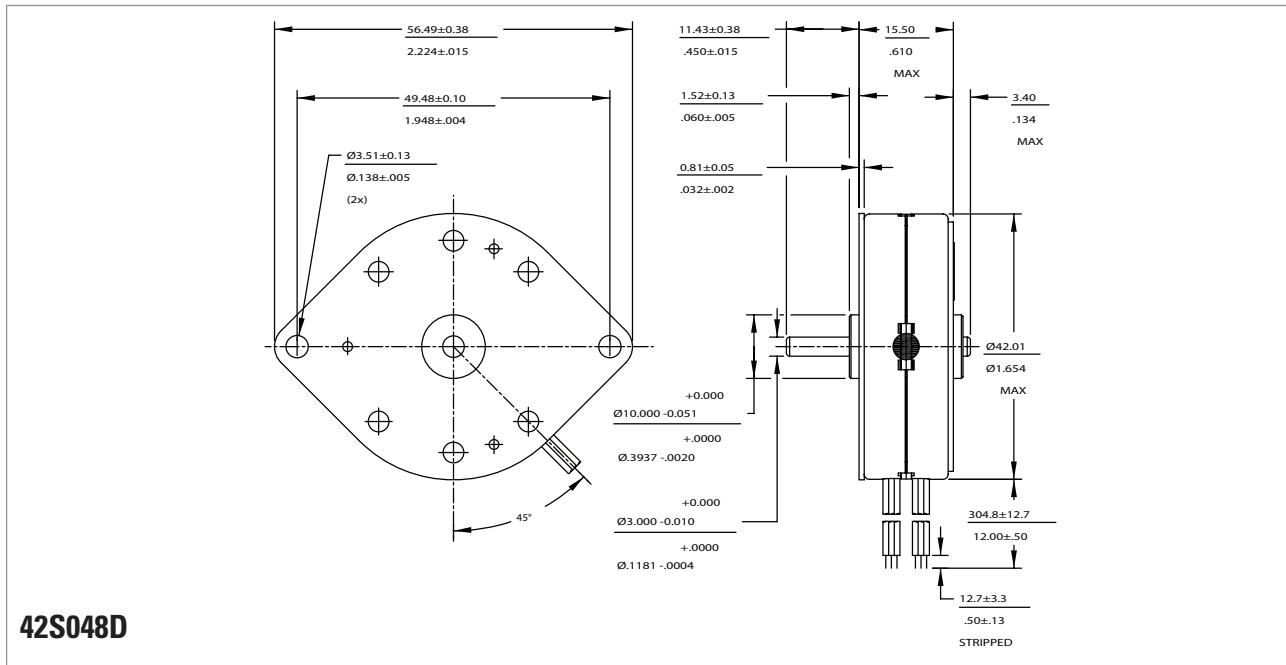


**42S048D**



**Technical Specifications**

Part Number	Unipolar		Bipolar		
	42S048D1U	42S048D2U	42S048D1B	42S048D2B	
Rated voltage	(vdc)	5	12	5	12
Resistance per phase ± 10%	(ohms)	12.50	75.00	12.50	75.00
Inductance per phase, Typ	(mH)	5.80	32.90	9.60	55.00
Rated current per phase *	(amps)	0.40	0.16	0.40	0.16
Holding torque, min *	(oz-in / mNm)	6.3 / 44.4		7.4 / 52.1	
Step angle *	(degrees)	7.5 ± 0.5°			
Steps per revolution *		48			
Detent torque, max	(oz-in / mNm)	1.7 / 12			
Thermal resistance	(°C / watt)	N.A.			
Rotor moment of inertia	(oz-in-s <sup>2</sup> / g-cm <sup>2</sup> )	0.0519 / 9.5			
Ambient temperature range					
Operating	(°C)	-20 ~ +70			
Storage	(°C)	-40 ~ +85			
Bearing type		Sintered Bronze Sleeve			
Insulation resitance at 500vdc	(vac)	100 megohms			
Dielectric withstanding voltage	(lbs / g)	650 for 2 seconds			
Weight		0.1938 / 88			
Shaft load ratings, max at 1500 rpm					
Radial	(lbs / kg)	0.562 / 0.255			
Axial	(lbs / kg)	0.169 / 0.076			
Leadwires		AWG 28, UL 3265			
Temperature class, max		B(130°C)			
RoHS		Compliant			

All motor data values at 25°C unless otherwise specified  
\* Energise at rated current, 2 phase on